



Drilling Dust Extractor

- ▲ Collects dust while drilling on wall or floor
- ▲ Designed also for guiding the hole drilling
- ▲ Universal rubber adaptor diam. 25-35mm
- ▲ Rubber sealing base largely prevents the leakage of fine dust
- ▲ Steel V frame for enhanced strength
- ▲ Suitable for tiles, concrete and bricks etc.

| Art.No | Size |
|--------|------------|
| TDBS | Up to 72mm |



Cutting Dust Extractor

- ▲ Collects dust while cutting tiles
- ▲ Can be used with BIHUI angle grinder
- ▲ Designed with level support for easily straight cutting
- ▲ Suitable for cutting disc in 115mm and 125mm

| Art.No | Size |
|--------|-------------|
| TDBC | Ø 115-125mm |



Grinding Dust Extractor

- ▲ Better health and less cleaning due to dust-free grinding
- ▲ Universal vacuum cleaner connection: diam 25-35 mm
- ▲ Brush rim largely prevents the leakage of fine dust
- ▲ Adjustable front part allows edge work
- ▲ Adjustable snap closure for secure mounting on the angle grinder

| Art.No | Size |
|--------|-------------|
| DCWDE5 | 100-125mm |
| DCWDEB | Spare brush |



Vacuum Brazed Coating & Glue Grinding Cup Wheel

- ▲ Spiked diamonds for aggressive and fast material removal as well as surface preparation
- ▲ Features with air holes designed to aid in and maintain a cool stable cutting pattern and reduced wear
- ▲ Reinforced compound technology with high durability against impact and abrasion
- ▲ Suitable for removing epoxy, adhesive residues, paint coatings etc. from concrete, granite, sandstone and building material

| Art.No | | | | MAX RPM | |
|--------|-------|----|---------|---------|----|
| DCWG5 | 125mm | 5" | 22.23mm | 12250 | ☀️ |
| DCWG7 | 180mm | 7" | 22.23mm | 8500 | |



Dual-Row Cup Wheel

- ▲ Double row design for aggressive and fast material removal as well as surface preparation
- ▲ Features with air holes designed to aid in and maintain a cool stable cutting pattern and reduced wear
- ▲ Suitable for grinding, smoothing and for removing of adhesives and materials from concrete, granite, sandstone and building material

| Art.No | | | | MAX RPM | |
|--------|-------|----|---------|---------|----|
| DCWD5 | 125mm | 5" | 22.23mm | 12250 | ☀️ |
| DCWD7 | 180mm | 7" | 22.23mm | 8500 | |



Turbo Cup Wheel

- ▲ Spiral turbo design for aggressive and fast material removal as well as surface preparation
- ▲ Features with large air holes designed to aid in and maintain a cool stable cutting pattern and reduced wear
- ▲ Suitable for grinding, smoothing and for removing of adhesives and materials from concrete, granite, sandstone and building material

| Art.No | | | | MAX RPM | |
|--------|-------|----|---------|---------|----|
| DCWT5 | 125mm | 5" | 22.23mm | 12250 | ☀️ |
| DCWT7 | 180mm | 7" | 22.23mm | 8500 | |



Fan Cup Wheel

- ▲ Turbo fan design for aggressive and fast material removal as well as surface preparation
- ▲ Features with large air holes designed to aid in and maintain a cool stable cutting pattern and reduced wear
- ▲ Suitable for grinding and smoothing materials like concrete, granite, sandstone and building material

| Art.No | | | | MAX RPM | |
|--------|-------|----|---------|---------|----|
| DCWF5 | 125mm | 5" | 22.23mm | 12250 | ☀️ |
| DCWF7 | 175mm | 7" | 22.23mm | 8500 | |



Arrow Cup Wheel



- ▲ Arrow segment design for aggressive and fast material removal as well as surface preparation
- ▲ Features with large air holes designed to aid in and maintain a cool stable cutting pattern and reduced wear
- ▲ Suitable for grinding and smoothing materials like concrete, granite, sandstone and building material as well as adhesive, epoxy and paint removal

| Art.No | | | | MAX RPM | |
|--------|-------|----|---------|---------|----|
| DCWA5 | 125mm | 5" | 22.23mm | 12250 | ☀️ |
| DCWA7 | 175mm | 7" | 22.23mm | 8500 | |



Concrete Floor Grinder

- ▲ Made of durable aluminum alloy, metal and engineering nylon
- ▲ Ergonomic design characterized with the increased balance and flatness
- ▲ Suitable for almost all 180mm diamond or resin discs
- ▲ Featured with power-off & overloading protections, and speed regulation
- ▲ Full wave electronics, soft start, and with a start-current limit function
- ▲ Removable front protective cover with magnetic, convenient for corner grinding (inner corner)
- ▲ Self-cleaning design, equipped with professional vacuum cleaner interface, can be used in vacuum bag or vacuum cleaner, dust-free operation
- ▲ Removing old surfaces as well as preparing a new base for secondary renovation
- ▲ Suitable for materials like tile, concrete, etching, tile adhesive, natural stone, plaster, paint, coating, adhesive carpet etc.

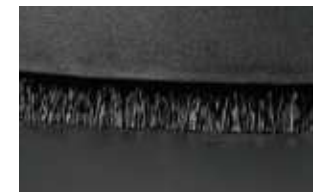
| Technical Data | | Art.No |  |  | RIM |
|----------------|-----------|-----------|---|---|----------|
| Art.No | CG1900 | CG1900W | 180mm(7") | 22.23mm | Dual row |
| Output | 1900W | CG1900-GW | 180mm(7") | 22.23mm | Spike |
| Voltage | 230V/50Hz | | | | |
| Speed | 0-3000RPM | | | | |
| Cup Wheel | 180mm(7") | | | | |



180mm Diamond or resin discs



Protective cover with magnetic



Dust-free brush



Connection pipe to vacuum cleaner



Constant speed and soft start



Variable speed switch



CONCRETE FLOOR GRINDER



Working Stand for Concrete Grinder

- ▲ Working stand with 1.0-1.2M adjustable height and ergonomic handles
- ▲ With 2.5M cable, switch box and universal wheels and positioner device
- ▲ Suitable for BIHUI 1900W Concrete Grinder
- ▲ Save labor and energy when polishing or grinding large areas surfaces

| Art.No | Size |
|--------|-------------------------|
| CGWS19 | 1.0-1.2M(40")-(47-1/4") |






Concrete Floor Grinder

- ▲ Made of durable aluminum alloy, metal and engineering nylon
- ▲ Ergonomic design characterized with the increased balance and flatness
- ▲ Featured with power-off & overloading protections, and speed regulation
- ▲ Full wave electronics, soft start, and with a start-current limit function
- ▲ Removing old surfaces as well as preparing a new base for secondary renovation
- ▲ Suitable for materials like tile, concrete, etching, tile adhesive, natural stone, plaster, paint, coating, adhesive carpet etc.

| Technical Data | |
|-----------------------|-----------|
| Art.No | CG2000 |
| Power: | 2000W |
| Rated voltage: | 230/110V |
| Frequency: | 50/60HZ |
| Speed: | 0-3000RPM |
| Cup wheel: | 180mm(7") |
| VDE plug and 3m cable | |



PATENTED

| Dust class* | Maximum transmittance | Suitable for | Disposal |
|---|-----------------------|--|-----------|
| L  | ≤ 1,0% | Dusts with OEL** values > 1 ³ mg/m Domestic dust, soil, lime | — |
| M  | < 0,1% | Dusts with OEL** values ≥ 0,1mg/m ³ Wood, screed, primer coat and paint, plaster, cement, concrete, tile adhesive, paints such as latex and oil paints, quartz containing materials such as sand and pebbles | Low dust |
| H  | < 0,005% | Dusts with OEL** values < 0,1 ³ mg/m Carcinogenic dust, dust with pathogens, dust with bacteria | Dust free |





Antistatic Hose 4M



Floor Brush



Handle



Wand



Plastic Crevice Tool



Reducer Adapter



Dust Bag



Dust Collection Bag



Industrial Vacuum Cleaner 38L

- ▲ Innovative auto clean system ensure the vacuum works at high suction
- ▲ Equipped with 2 HEPA filters stops 99.95% of fine dusts at 0.3µm.
- ▲ Wet and dry for liquids and dry solids extraction
- ▲ Power socket for power tool use activates automatically
- ▲ Suction power control for adapted suction performance
- ▲ Automatic trailing mechanism for emptying the suction hose completely
- ▲ Robust wheels and castors built to withstand the tough construction site
- ▲ Cable wrap for convenient cord storage
- ▲ Practical accessory case and storage area.

| Technical Data | | |
|----------------------|-------------------------|------------|
| Art.No | VCB38 | VCA38 |
| Voltage / Frequency | 230V/50Hz | 110V/60Hz |
| Motor power (w) | 1200W | 1.85HP |
| Airflow (max) | 262M³/H | 153CFM |
| Water lift (Max) | 250 | 104Inch |
| Filter efficiency | HEPA, >99.5%@0.3µm | |
| Filter cleaning | Innovated auto cleaning | |
| Airflow adjustable | adjustable | adjustable |
| Power socket | 2000W | 1200W |
| Remote control start | Optional | Optional |
| Tank capacity | 38L | 10Gal |
| Weight | 13.5kg | 30lbs |
| Dust Class | H class | |



NEW

Vacuum Cleaner 35L

- ▲ High-quality stainless steel suction tubes
- ▲ Flow rate monitoring with warning LED and acoustic warning signal
- ▲ Hose diameter selector switch Robust chassis with extra-large, construction site suitable wheels and swivel castors
- ▲ Adjustable, foldable push bar for easy transport
- ▲ Constantly high air flow also during filter cleaning
- ▲ Electronic soft start with deferred rundown switching
- ▲ Power socket with automatic switch-on for attached machine
- ▲ Water recognition with sensor disconnection
- ▲ Special plastic bag for clean disposal - Transport closure by sealing plug

| Technical Data | | |
|---------------------|--------------|--------------|
| Art.No | VCM35 | VCL35 |
| Voltage / Frequency | 230V/50Hz | 110V/60Hz |
| Motor power (w) | 1200W | 1080W |
| Airflow (max) | 250 mbar | 153CFM |
| Water lift (Max) | 250 | 104 inch |
| Airflow adjustable | adjustable | adjustable |
| Power socket | 2000W | 1200W |
| Tank capacity | 35L | 9.25Gal |
| Weight | 16Kg | 35 lbs |
| Dust Class | M class | |
| Suction hose 35mm | 5M | 5M |
| Suction hose 38mm | 2.5M | 2.5M |
| Noise(LpA) | LpA 74dB(A) | LpA 74dB(A) |
| Dimension(LxWxH) | 54x39x63.5cm | 54x39x63.5cm |



Suction hose D35 5M anti-static, oil-resistant



Suction hose D38 2.5M anti-static, oil-resistant



Power tool adapter Ø21, 25, 32mm
Power tool adapter Ø35mm



Dry floor nozzle 450mm



Crevice nozzle



Round nozzle Ø 75mm



HEPA 13 cartridge filter



Vacuum tubes, stainless steel, 2 x 0,5M



Fleece filter bag



Disposal bag



VACUUM CLEANER



Vacuum Cleaner 30L

- ▲ Suitable for extracting solid particles (dust and cutting waste) and water
- ▲ Semi-automatic HEPA filter cleaning system
- ▲ Blower function
- ▲ Dust full indicator
- ▲ Power tool socket function
- ▲ On-board accessory storage
- ▲ Drain device for convenient liquid disposal
- ▲ Convenient hose hook for easy transport and storage

| Technical Data | | |
|--|--|-----------|
| Art.No | | VCH30 |
| Voltage / Frequency | | 230V/50Hz |
| Motor power (w) | | 1200W |
| Airflow (m³ / min) | | ≥ 1.8 |
| Vacuum pressure (KPa) | | 16.5±1.5 |
| Noise (LpA) | | ≤ 70 |
| Tank capacity (L) | | 30 |
| Electrical cord Length (m) | | 2.3 |
| Lifetime (H) | | 350 |
| Protection class | | IPX4 |
| New weight | | 9.5Kg |
| Power socket for electro portable tool max. 2.000W | | |

Manufacturer reserves the right to change specifications without notice.
Specifications may differ from country to country



Hose Tube



Wet Use Floor Brush
For also sucking water



Carpet Floor Brush
For carpet use



Sofa Brush
For curtains and funitures



Round Brush
For sawdust etc.



Crevice Nozzle
For corners, cracks etc.



HEPA Filter



Plastic Connection Parts